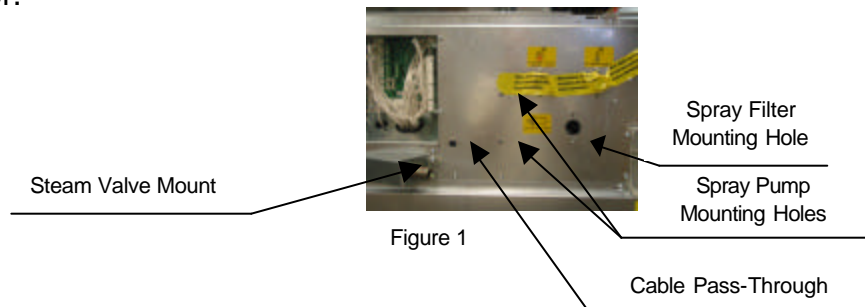


# INSTALLATION OF SPRAY PUMP, FILTER AND STEAM VALVE ON GEN 6 AQUA-CLEAN WASHER

**CAUTION:** THESE INSTRUCTIONS ARE INTENDED TO ASSIST QUALIFIED, EXPERIENCED SERVICE PERSONNEL ONLY! IMPROPER SERVICING OF MACHINERY MAY RESULT IN HAZARDOUS CONDITIONS, PERSONAL INJURY, OR DAMAGE TO PROPERTY. PERSONS NOT TRAINED, OR PERSONS UNFAMILIAR WITH WASCOMAT LAUNDRY MACHINES, SHOULD REFER SERVICING TO QUALIFIED PERSONNEL.

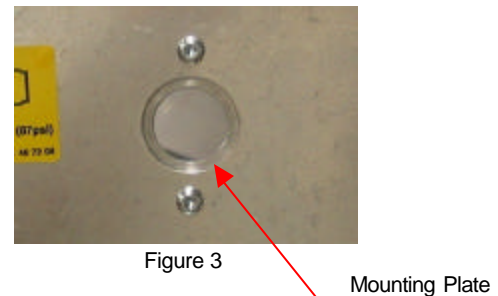
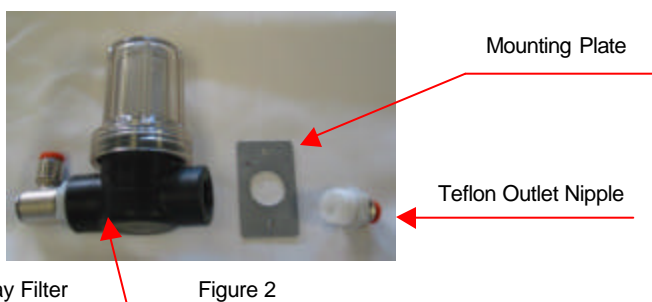
**Always disconnect electrical power before servicing equipment!!!**

1. Remove the top cover panel and the electrical connection compartment panel cover from the washer.



2. Spray Filter.

Use a 24 mm box wrench or channel lock pliers to remove the Teflon Outlet Nipple and the mounting plate from the outlet end of the spray filter. (See Figure 2)



Use the two self-tapping screws to fasten the mounting plate to the inside surface of the washer back-panel as shown in figure 3.

Mount the filter to the outside of the washer with the clear filter canister facing down by re-installing the Teflon fitting through the mounting plate. Use Teflon tape on the fitting to achieve a good seal. See Figure 4. Be careful not to over-tighten the fitting. It can be easily broken.



Figure 4

Connect the blue spray hose by pushing it into the filter outlet nipple inside the machine.

## 2. Spray Injector Pump

Assemble the spray pump mounting bracket and the hose connectors onto the pump as shown in Figure 5.

If your machine does not have the spray pump mounting holes shown in Figure 1, hold the spray pump assembly against the back of the machine as shown in Figure 5 and mark two hole locations. The holes should be approximately 4½ inches from the edge of the electrical connection compartment. The lower hole should be approximately even with the lower edge of the electrical connection compartment. Use a 1/8 inch drill bit to drill mounting holes. Mount the spray pump assembly on the washer. The short hose connector should be facing down and the electrical connector should be facing left.

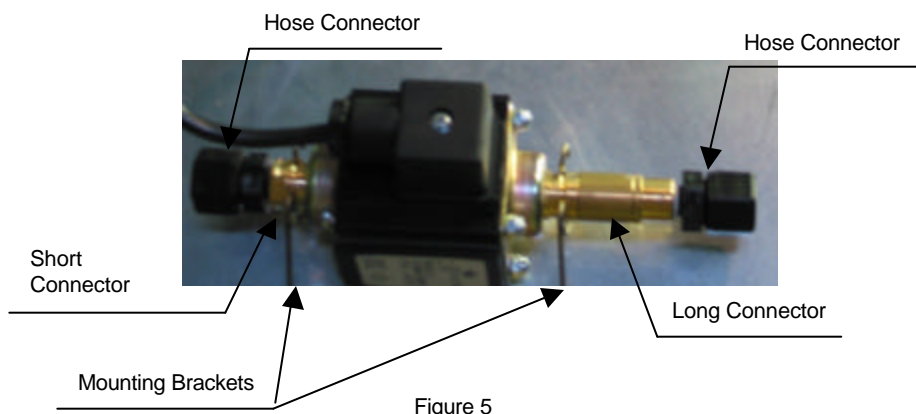


Figure 5

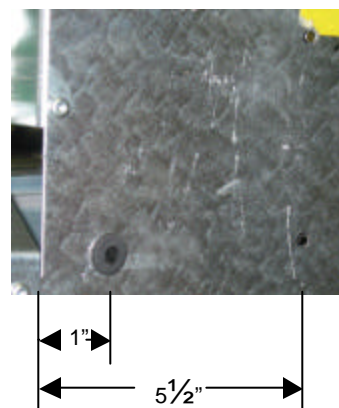


Figure 6

If your machine does not have the cable pass-through hole shown in Figure 1, drill a ½ inch hole approximately even with lower edge and about one inch from the right side of the electrical connection compartment opening. Mount the rubber grommet in the hole. See Figure 6.

Remove about 2 inches of outer insulation from the spray pump cable. Place the square gasket on the pump electrical connector and connect the connector to the pump. Pass the other end of the cable through the grommet and through the small wire harness opening into the electrical connection compartment. Connect the blue wire to the top terminal (common) of terminal strip X72. Connect the brown wire to the next-to-lowest terminal (L3). Connect the green/yellow wire to the ground terminal block. See Figure 7.



Figure 7

### 3. Steam Valve

Mount the 45 degree fitting to the outlet side of the steam valve. Assemble the nipple, strainer and elbow to the to the inlet side of the steam valve. See Figure 8. Be sure to use jute rope and plumbers sealant to create a tight seal at these joints.

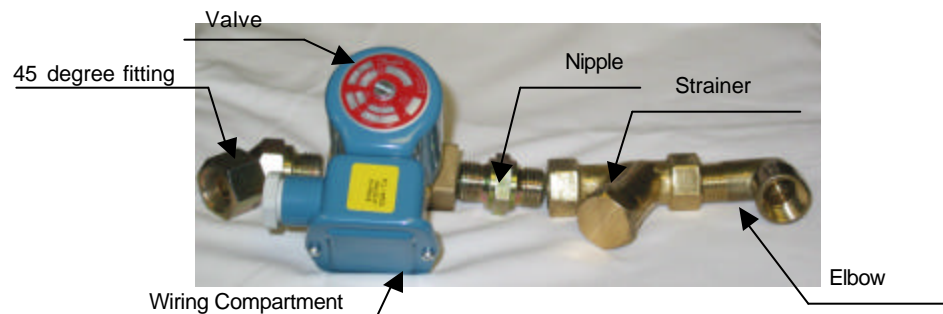


Figure 8

Remove the cover plate from the steam valve wiring compartment. Remove the plastic fitting from the cable input on the valve. Remove the nut from the cable fitting at the end without the connector on the wires. Pass the three wires through the cable input and thread the fitting on the cable into the cable input. Do not over-tighten. Connect the green/yellow wire to the ground stud inside the valve wiring compartment. Connect the two white wires to the screw terminals.

Mount the steam valve assembly to the washer as shown in Figure 9. This is a compression fitting. Do not use any thread sealing compound.



Figure 9

Note that it may be necessary to reverse the position of the actuator on the valve body to be able to mount the valve as shown in the illustration. To do this, remove the screw from the top of the actuator, lift the actuator away from the valve body and rotate it 180 degrees. Push the actuator down to the valve body and replace the screw.

Remove one plastic filler cap from the back of the machine. See Figure 10. Remove the nut from the fitting at the end of the cable with the connector. Thread the end of the steam valve cable with the connector through the opening and fasten the cable in place by inserting the threaded cable fitting into the opening and replacing the nut. Do not over-tighten. Thread the wires through the large opening into the electrical connection compartment. Connect the connector to X46 on the distribution circuit board and connect the yellow/green wire to the ground terminal block. Replace the cover on the steam valve wiring compartment.

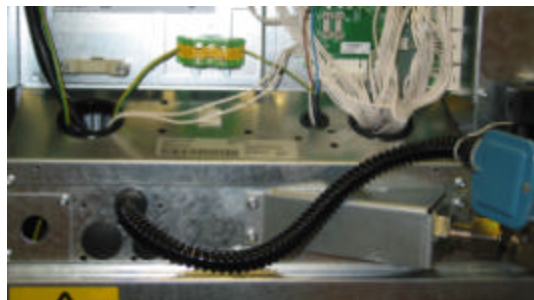


Figure 10

Connect one end of the short piece of white tubing to the upper compression fitting on the spray pump. Trim it to the necessary length and connect the other end to the press-in fitting on the spray filter. Be sure to run the tubing so that it does not come into contact with any of the brass steam valve fittings. See Figure 11. Connect the long piece of tubing to the lower fitting on the spray pump and connect the other end to the chemical supply.



Figure 11

Call Wascomat Technical Support at 516-371-0700 for assistance.